

# Chio Amalfi



*Yellow*

*Blue*

*Tiffany*

*Chio Amalfi*  
YELLOW CRAQUELÉ

*Chio Amalfi*  
BLUE CRAQUELÉ

*Chio Amalfi*  
TIFFANY CRAQUELÉ



Finishes	Sizes	Net weight	Shade	Light source	Certification
Finishes and Fabrics of Heritage Collection, see pag. 276-279	H. cm 79 W. cm 50	kg 2,2	Mod. W4	1xE27	CE



*Vietri  
Craquelé  
Ceramics*

## Chio Amalfi

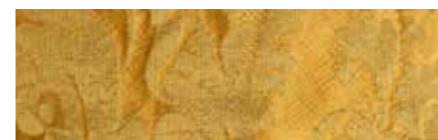
*Luxury  
Fabrics*

*Craquele,  
Handcraft  
Effect*

This lamp embodies the perfect synergy of **exceptional design and masterful craftsmanship**, featuring **luxurious handmade fabrics** that bring **timeless elegance to life**. Carefully created by **skilled artisans**, each fabric contributes to the piece's distinctive **refinement and quality**. The lamp is crafted with intricate **bronze castings**, made using the ancient **lost-wax technique** and finished with

a stunning **24k gold**. Its centerpiece is a **crack-led ceramic body**, handmade in **Vietri sul Mare**, a region celebrated for its **centuries-old ceramic artistry**. Adorned with **bronze-cast leaves**, this lamp harmoniously blends **traditional artistry with modern luxury**, making it an exquisite focal point for any sophisticated space.

## LUXURY FABRICS



*Ancient Gold*

**Composition**  
100% silk



*Damasco Blue*

**Composition**  
100% silk



*Pink Velvet Garden*

**Composition**  
88% silk, 12% cotton